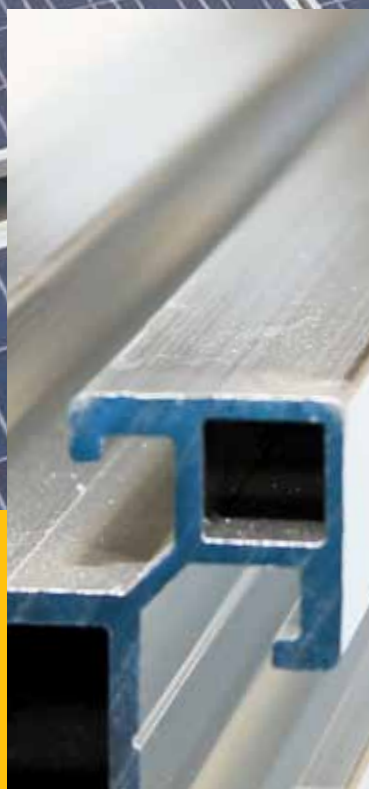


MOUNTING RAILS  
CARRIERS FOR RAILS  
FASTENERS  
BOLTS AND NUTS  
CLIPS  
FLAT ROOFS STRUCTURES  
FREE FIELD SYSTEMS  
COMPLEX ROOFS SYSTEMS



## ALUMINIUM SOLAR MOUNTING SYSTEM

**SOL** **A** **L** **U**

FOR ALL TYPES OF ROOFS AND SITES

## SOLAR MOUNTING SYSTEM SOLALU

Years of experience in fixing solar power plants on different types of surfaces led us to the development of our own modular mounting system, which is characterized by:

- **modular system for all types of roofs**
- **strength and stability**
- **quality**
- **economic efficiency and competitive pricing**
- **resistance to all weather conditions**
- **short mounting times**
- **reduced weight**
- **maximum durability**
- **10-year warranty on material**

### SIMPLE AND EASY INSTALLATION



### OUR SYSTEM HAS BEEN USED ON MORE THAN 150 SOLAR POWER PLANTS



### DESIGN SOLUTIONS FOR INDIVIDUAL PROJECTS





# MOUNTING RAILS



## Mounting rail 40x40

Aluminium

Item no.	Length_L/ mm
----------	-----------------

310001	6100
--------	------

Mechanical connection:

Top: Click groove M8

Bottom: Screw channel M10



## Mounting rail 40x40 with sideward screw channel for direct bolting into the section

Aluminium

Item no.	Length_L/ mm
----------	-----------------

310012	6100
--------	------

Mechanical connection:

Top: Click groove M8

Right: Screw channel M8



## Mounting rail 40x40 with 4 tracks for normal mounting and sideward bolting

Aluminium

Item no.	Length_L/ mm
----------	-----------------

310002	6100
--------	------

Mechanical connection:

Top, left, right: Click groove M8

Bottom: Screw channel M10



## Mounting rail 80x40

Aluminium

Item no.	Length_L/ mm
----------	-----------------

310003	6100
--------	------

Mechanical connection:

Top: Click groove M8

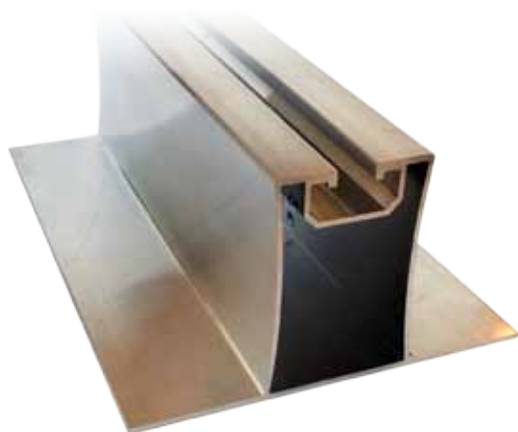
Bottom: Screw channel M10



### Mounting rail 80x40 with 4 tracks for normal mounting and sideward bolting

Aluminium

Item no.	Length_L/ mm
310004	6100
Mechanical connection:	
Top, left, right:	Click groove M8
Bottom::	Screw channel M10

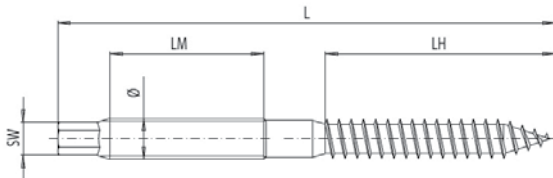


### Mounting rail 100x55 for trapezoidal sheet metal (direct mounting)

Aluminium

Item no.	Length_L/ mm
310020	6100
Mechanical connection:	
Top:	Click groove M8

# CARRIERS FOR RAILS



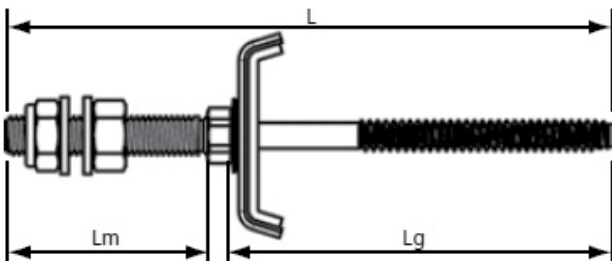
## Hanger bolts with flange nut and EPDM-sealing washers for wooden substructures

With hexagon head and with DIN 6923 nut, EPDM-sealing washer

Stainless steel A2



Item no.	Ø	Length_L/ mm	Metric thread_LM/ mm	Traction thread_LH/ mm	Drive
330045	M10	160	70	67	SW7
330021	M10	200	85	67	SW7
330022	M10	250	85	67	SW7
330019	M10	300	150	67	SW7
330020	M12	300	150	100	SW9



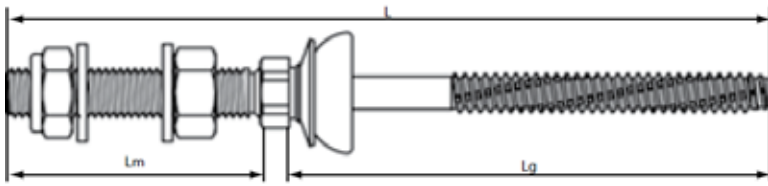
## Solar fastener type BZ for steel substructures

For steel substructures with captive sealing washer, including caps

Stainless steel A2



Item no.	Ø	Length_L/ mm	Metric thread_Lm/ mm	Traction thread_Lg/ mm	Washers Ø/ mm	Clamping range/ mm	Drive
330037	8	136	50	80	19	15-60	SW5
330039	8	156	50	100	19	35-80	SW5
330015	8	216	50	160	19	95-140	SW5

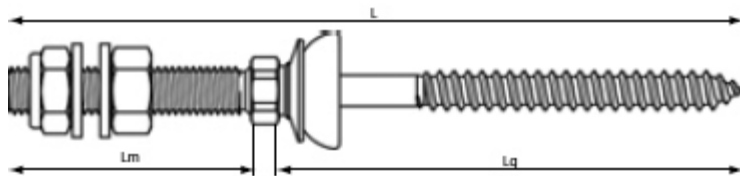


### Solar fastener type BZ for steel substructures

For steel substructures with captive sealing washer for corrugated fibre cement slabs

Stainless steel A2

Item no.	Ø	Length_L/ mm	Metric thread_lm/ mm	Traction thread_lg/ mm	Washers Ø/ mm	Clamping range/ mm	Drive
330044	8	136	50	80	25	15-55	SW5
330035	8	181	50	125	25	55-100	SW5
330046	8	256	50	200	25	130-175	SW5
330034	8	201	70	125	25	55-100	SW5



### Solar fastener type A for wooden substructures

For wooden substructures with captive sealing washer for corrugated fibre cement slabs

Stainless steel A2

Item no.	Ø	Length_L/ mm	Metric thread_lm/ mm	Traction thread_lg/ mm	Washers Ø/ mm	Clamping range/ mm	Drive
330038	8,4	186	50	130	25	45-85	SW5



## Adapter plates

Adaptor plates to connect hanger bolts to profiles

Aluminium



Item no.	Ø	Dimensions (LxBxS) / mm
510008	M10	85x35x6
510030	M12	85x35x6

## Roof hook vario type

Stainless steel A2



Item no.	Plate dimensions / mm	Length / mm
500016	140x50x5	100

## Trapezoidal clamp - flex with EPDM sealing tape for all trapeze profiles

Stainless steel A2



Item no.

500030

## Sealing tape



Item no.		Dimensions / mm
340021	Butyl tape black	20x2x22500
340033	Butyl tape white alu	50x1,5x20000
340029	Butyl EPDM foam	28x2x20000

# FASTENERS



## Connector for rails

Aluminium

Item no.	Length_L/ mm
510007	250

## L connector

Aluminium



Item no.	Dimensions/ mm
500024	40x60x6



# BOLTS AND NUTS

## Hexagon socket cap screws DIN 912 with serration

Stainless steel A2

Item no.	Ø	Length_l/ mm	Head height_k/ mm	Drive
330003	M8	16	8	SW6
330004	M8	20	8	SW6
330005	M8	25	8	SW6
330006	M8	35	8	SW6
330007	M8	40	8	SW6
330008	M8	45	8	SW6
330009	M8	50	8	SW6
330018	M8	55	8	SW6

## Self-drilling screws DIN 7504 with hexagon head and washer for aluminium

Stainless steel A2

Item no.	Ø	Length_l/ mm	Drive
330013	5,5	25	SW8
330014	6,3	25	SW8

## Self-drilling screw with hexagon head and washer for sheet metal

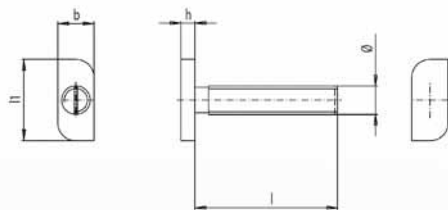
Stainless steel A2

Item no.	Ø	Length_l/ mm	Drive
330040	6,5	20	SW9

## Self-drilling screw with hexagon head and washer for sheet metal (special smooth coating, maximum hold on thin sheets)

Stainless steel Bi-Metal A2

Item no.	Ø	Length_l/ mm	Drive
330050	6,0	25	SW8



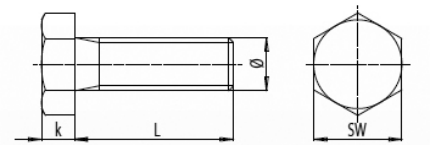
### Hammerhead screws

Stainless steel A2

Item no.	Ø	Length_l/ mm	Head length_l1/ mm	Head width_b/ mm	Head height_k/ mm
330049	M8	20	22,5-23,0	10	4
330012	M10	25	22,5-23,0	10	5

### Hexagon head screws DIN 933 with full thread

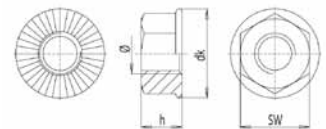
Stainless steel A2



Item no.	Ø	Length_l/ mm	Head height_k/ mm	Drive
330001	M8	25	5,3	SW13
330002	M10	25	6,4	SW17

### Hexagon flange nuts with serration DIN 6923

Stainless steel A2

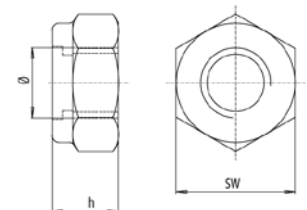


Item no.	Ø	Height_h/ mm	Drive
500002	M8	8	SW13
500003	M10	10	SW15

### Hexagon flange nuts with serration DIN 6926

Locking function by non-metallis insert

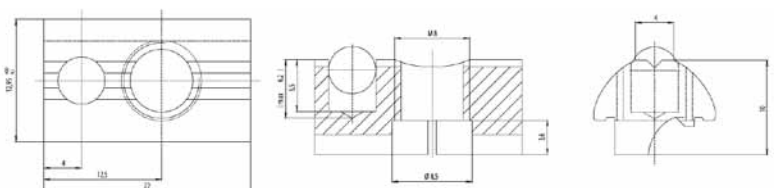
Stainless steel A2



Item no.	Ø	Height_h mm	Drive
500004	M10	10	SW15

### T-slot nuts

Aluminium



Item no.	Ø	Length_L/ mm	Width/ mm	Height/ mm
500017	M8	22	13	10

# CLIPS



## Middle clip

Aluminium

Item no.	Length_L/ mm
510015	70



## End clip

Aluminium

Item no.	Length_L/ mm	Height/ mm
500008	70	35
500009	80	40
510009	70	45
500010	70	50



## Middle clip - click

Aluminium and stainless steel A2

Item no.	Height/ mm	Length of the screw/ mm
510001	40	45
510002	45	50
510003	50	55



## End clip - click

Aluminium and stainless steel A2

Item no.	Height/ mm	Length of the screw/ mm
510004	40	45
510005	45	50
510006	50	55

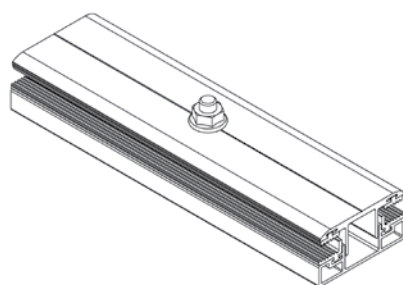


### Metal piece for panel grounding

Stainless steel A2

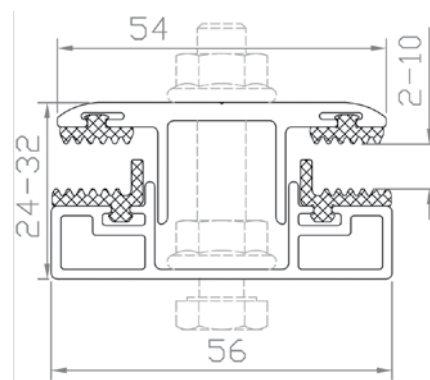
Item no.

510035



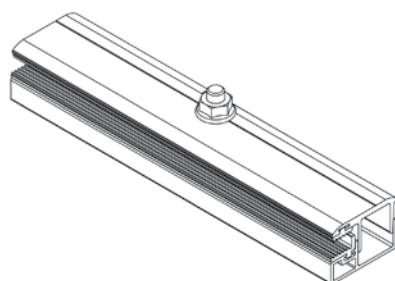
### Middle clip for glass-glass panels (thin-film)

Aluminium and stainless steel A2



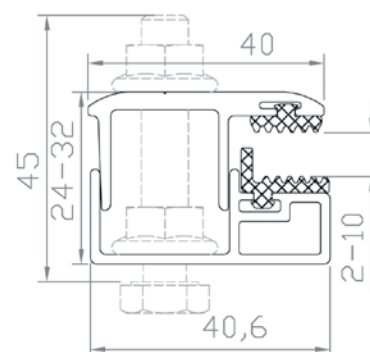
Item no.	Panel thickness/ mm	Length of the clip/ mm	Length of the screw/ mm
510033*	2-10	200	35 or 40

\* - screw in the picture is not included in the price



### End clip for glass-glass panels (thin-film)

Aluminium and stainless steel A2



Item no.	Panel thickness/ mm	Length of the clip/ mm	Length of the screw/ mm
510034*	2-10	200	35 or 40

\* - screw in the picture is not included in the price

# PREASSEMBLED STRUCTURES FOR FLAT ROOFS



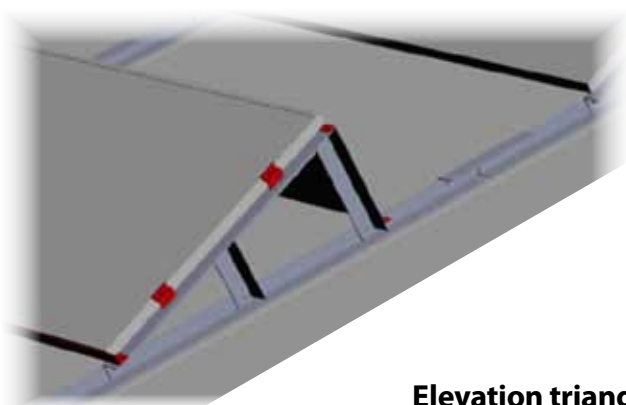
## Elevation triangles for flat roofs that allow drilling

(These items include only triangular structure without rails, fasteners, nuts, bolts etc.)

Aluminium

Item no.	Inclination	Position of modules	Maximum span
510013	30°	landscape	2000 mm
510022	30°	portrait	2000 mm

We can supply structure for all inclinations between 10° and 40°. Price depends on the inclination.



## Elevation triangles for flat roofs that do not allow drilling like SIKA®

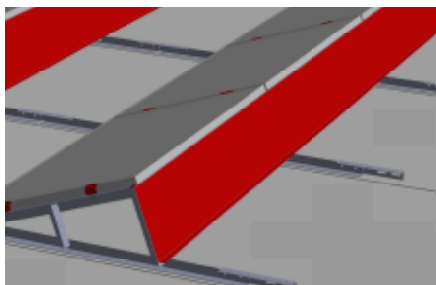
(These item include only triangular structure without panel for wind protection, protection tape, rails, fasteners, nuts, bolts, weights, etc.)

Aluminium

Item no.	Inclination	Position of modules	Maximum span
510026	25°	landscape	2000 mm

We can supply structure for all inclinations between 10° and 40°. Price depends on the inclination.





### Panel for wind protection on the back side of triangular structure for roofs that do not allow drilling like SIKA®

Aluminium

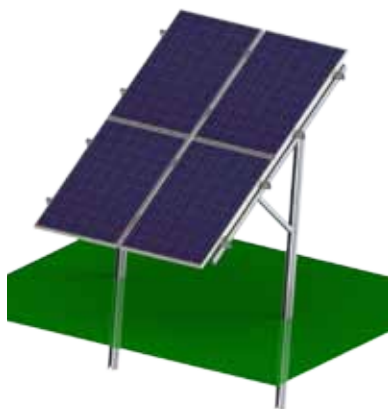
Item no.	Inclination	Position of modules
510036	25°	landscape

We can supply structure for all inclinations between 10° and 40°. Price depends on the inclination.

### Roof protection stripe

Item no.	For roof cover
340037	SIKA

## FREE FIELD MOUNTING SYSTEMS



### System SOLALU GROUND - SOIL

Hot-deep galvanized steel – piles

Aluminium – rails, clips

Stainless steel A2 – bolts, nuts, connection elements

Item no.	Inclination	Position of modules	Foundation
510031	30°	portrait (2 rows)	driving into the ground



### System SOLALU GROUND - STONE\*

Aluminium – rails, clips

Stainless steel A2 – bolts, nuts, connection elements

Item no.	Inclination	Position of modules	Foundation
510032	30°	portrait (2 rows)	concrete foundation

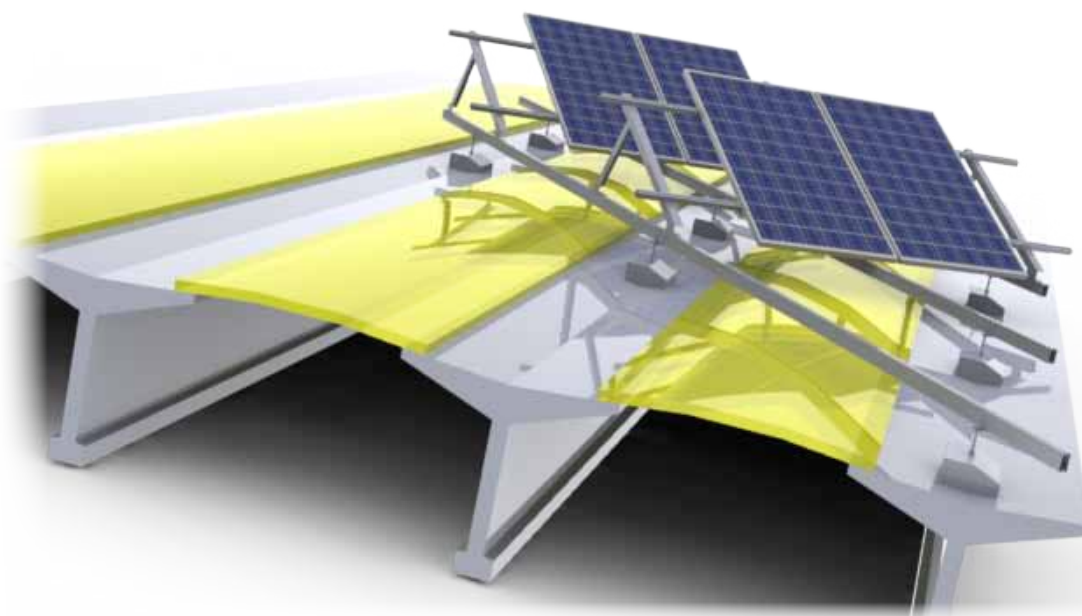
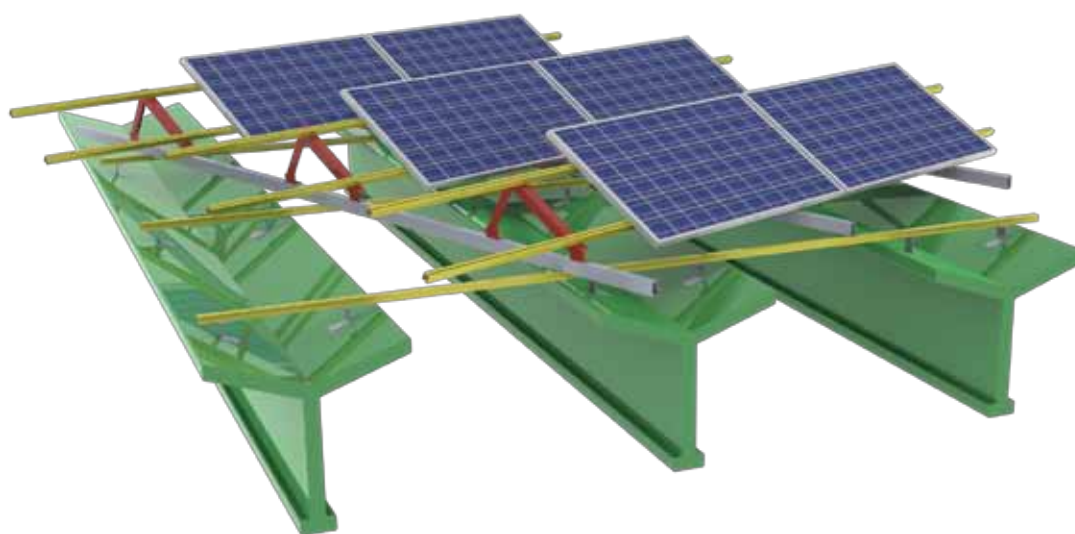
\*Concrete foundation is not part of this system and has to be prepared separately (approximately 0,2 m<sup>3</sup> of concrete per modul ).

# SYSTEMS FOR VERY COMPLEX ROOFS

## Design solutions for individual projects

Aluminium – rails, clips

Stainless steel A2 – bolts, nuts, connection elements





FOR ALL TYPES OF ROOFS AND ROOFING

**SOL NAVITAS**, Solar Power Ltd  
Opekarniška 15b, 3000 Celje, Slovenia

UK Distributor:



**SMS Metering Ltd**  
41 London Road, Castle Court,  
Reigate RH2 0DD  
tel: 0845 604 7244  
e-mail: [info@smsmetering.co.uk](mailto:info@smsmetering.co.uk)  
[www.smsmetering.co.uk](http://www.smsmetering.co.uk)

